

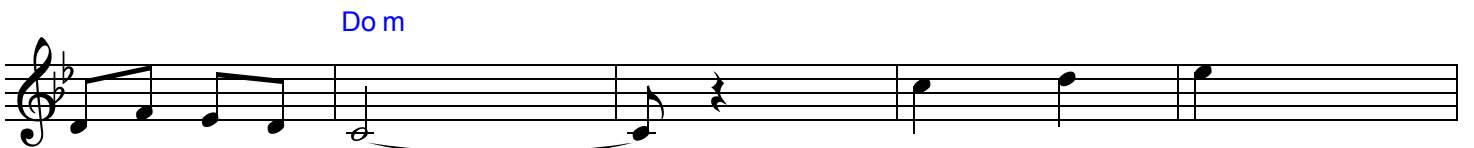
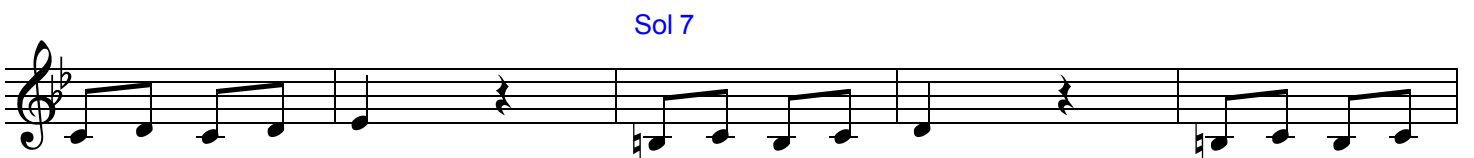
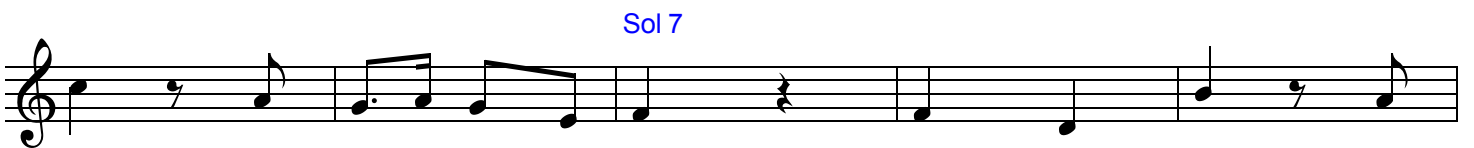
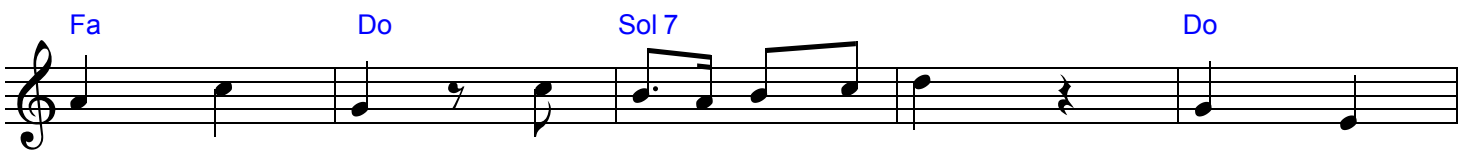
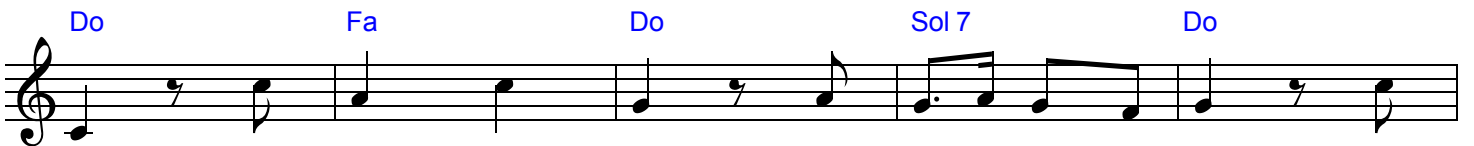
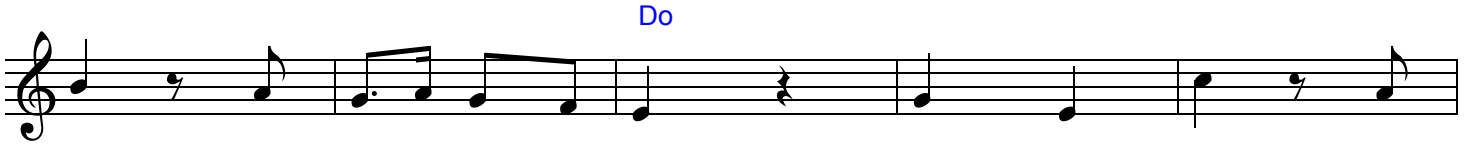
"MUZIK - POLKA"

♩ = 132

♩ Do

Sol 7

Chant



The image shows a musical score for a single melodic line on a treble clef staff. The music is written in a key with one flat (B-flat major or D minor) and a common time signature. The score consists of four staves of music. Chord labels are placed above the notes in blue text: Sol 7, Do m, Sol 7, Do m, Do m, Sol 7, Coda, Do, Sol 7, Do, Do FIN. The first staff starts with a whole note G4 (labeled Sol 7) followed by a half note G4, a quarter rest, a quarter note G4 (labeled Do m), a quarter note A4, a quarter note Bb4, a quarter note A4, and a quarter note G4. The second staff begins with a quarter rest, followed by a quarter note G4, a quarter note A4, a quarter note Bb4, a quarter note A4, a quarter note G4, a quarter rest, a quarter note G4 (labeled Sol 7), a quarter note A4, a quarter note Bb4, a quarter note A4, and a quarter note G4. The third staff starts with a quarter note G4, a quarter note A4, a quarter note Bb4, a quarter note A4, a quarter note G4, a quarter note G4 (labeled Do m), a half note G4 (labeled Do m), a quarter note G4 (labeled Sol 7), and a quarter rest. A double bar line with a repeat sign follows. The section ends with a Coda symbol and a double bar line. The fourth staff begins with a quarter note G4 (labeled Do), a quarter rest, a quarter note A4, a quarter note Bb4, a quarter note A4, a quarter note G4 (labeled Do), a quarter note G4 (labeled Sol 7), a quarter note A4, a quarter note Bb4, a quarter note A4, a quarter note G4 (labeled Do), and a quarter note G4 (labeled Do FIN) with an accent (^) above it. The piece concludes with a double bar line.