

# FRANCE ITALIE MUSETTE

1

## VALE ITALIENNE

ACCORDEON

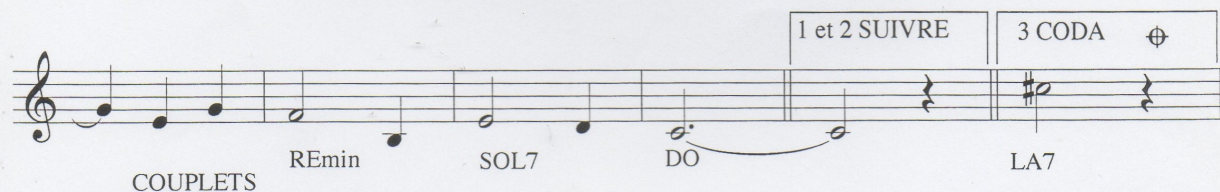
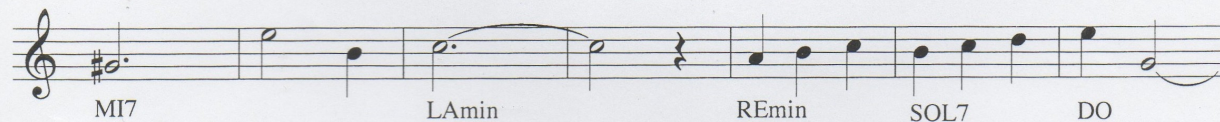
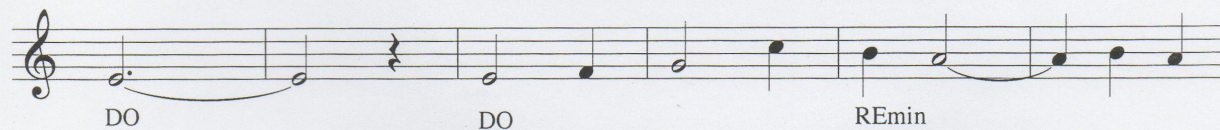
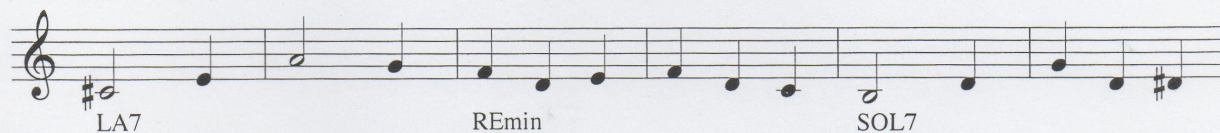
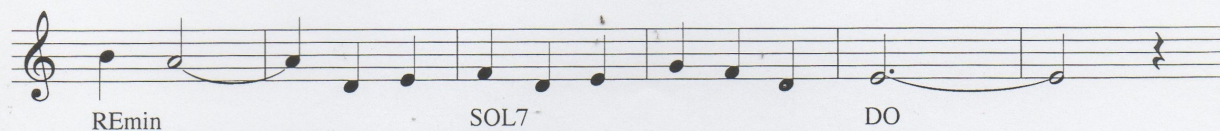
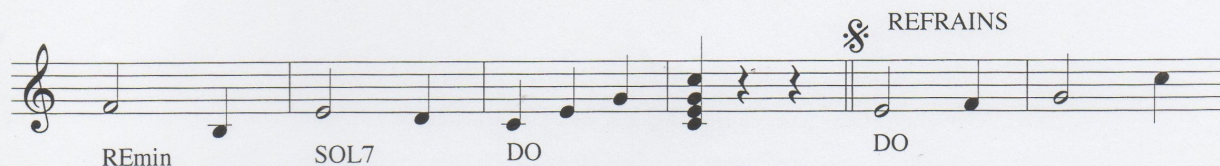
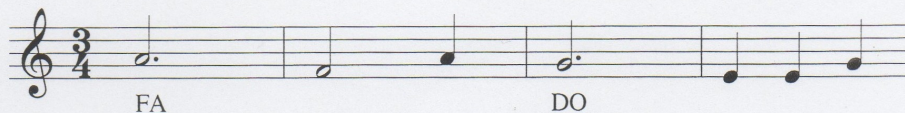
MUSIQUE de

LOUIS CAMBLOR

MICHEL LECUYER

DANY MAURICE

Tempo di VALE  $\text{♩} = 190$





SIb7 MIb FAmin  
SOL SOL7 DOmin FAmin  
SOL7 DOmin FAmin  
DOmin SOL7 DOmin

1 et 2 AU SIGNE

CODA

RE MImin LA7  
RE SI7 MImin LA7  
RE RE MImin  
FA#7 SImin MImin LA7  
RE MImin LA7 RE

FIN